

## RESEARCH WORKSHOP

# PASSCHENDAELE ARCHIVES

This workshop is based on the "Passchendaele Archives", a project of the Memorial Museum Passchendaele 1917 that tries to give the many names in the cemeteries and monuments a story and a face.

During this workshop participants receive information about a fallen soldier commemorated at Tyne Cot Cemetery. They use original WWI sources to reconstruct and map what happened on "their" fallen soldier's last day. In possession of a personal story behind the endless rows of names in the cemetery, this makes a visit to CWGC Tyne Cot Cemetery more concrete and meaningful.

This bundle contains information about this package that will enrich a group visit to our museum and Tyne Cot Cemetery.

## CONTENT OF THIS INFORMATION BUNDLE:

- Practical information – p. 2
- The research workshop – p. 3
- Personal records – p. 4
- In the area – p. 15



## PRACTICAL INFORMATION:

- ➔ Location: **workshop room** located within walking distance of the museum.
- ➔ **Max. 35 participants per session.**
- ➔ The workshop lasts about an hour and a half, but can be extended or shortened depending on your programme. This does not include the visit to CWGC Tyne Cot Cemetery.
- ➔ Target group: **visitors to Tyne Cot Cemetery** and those who are interested to learn more about the **soldiers who fell at Passchendaele.**
- ➔ Rates: [passchendaele.be/Education](http://passchendaele.be/Education)
- ➔ **Combination** with a visit to the Passchendaele Museum and/or Tyne Cot Cemetery is **recommended but is not mandatory.**
  - *The museum focuses on experience, with a recreated deep dugout and trenches. Historical objects, uniforms, video fragments and so on give students insight into the lives of soldiers on and behind the battlefields, and specifically the Battle of Passchendaele.*
  - *Tyne Cot Cemetery is the largest Commonwealth cemetery in the world. In addition to 11,956 graves, the Tyne Cot Memorial to the Missing contains 35,000 names of soldiers without a known grave.*
  - *Rates museum and guides: [passchendaele.be](http://passchendaele.be). Access to Tyne Cot Cemetery is free.*
- ➔ The workshop is supervised by our own supervisors.
- ➔ Group reservations (from 15 persons) are possible via our web shop [groepsreservatieszonnebeke.recreatex.be](http://groepsreservatieszonnebeke.recreatex.be). If you are new to the site, you can 'log in as a new user'. If you are already a client, you can request your account via [booking@passchendaele.be](mailto:booking@passchendaele.be).

Our museum team is always available to work out an excursion specifically to meet your needs. We are happy to share with you our experience in creating battlefield tours. We also have a large, skilled pool of guides for different age groups.


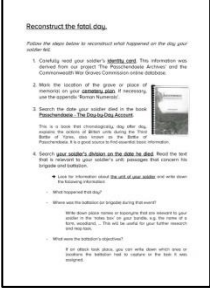
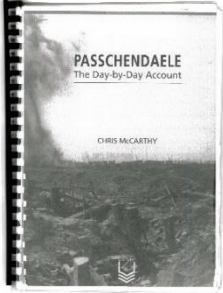

**Memorial Museum Passchendaele 1917**  
Berten Pilstraat 5A, BE-8980 Zonnebeke  
+32(0) 51 77 04 41 | [www.passchendaele.be](http://www.passchendaele.be)  
[education@passchendaele.be](mailto:education@passchendaele.be) | [booking@zonnebeke.be](mailto:booking@zonnebeke.be)



# THE RESEARCH WORKSHOP:

How does the research workshop Passchendaele Archives work? This is what the participants can expect:






1. The participants can take their places at work tables in small groups (**2 to max. 6 people is recommended, max. 15 of these small groups per session**). Each table has the **source material** they can use to research the story of "their" soldier:

|   |  |  |   |
|---|--|--|---|
|  |     |  |  |
| ↓   | ↓  | ↓  | ↓   |
| <b>Information sheet</b><br>with personal and<br>military details.                | <b>Information bundle</b><br>with step-by-step<br>guides, appendices and<br>sources. | Copy of the book<br><b>'Passchendaele – the<br/>Day-by-Day Account'</b> .          | A copy of a<br><b>'trench map'</b><br>and crayons.                                  |

Except for the book and the crayons, participants may take these papers home.

2. Our **educational supervisor** will explain to the group, with a PowerPoint presentation, how they can use the source material. **Tea, coffee and cake** are available for all participants during the workshop. Professional continuous assistance by at least two of our supervisors is guaranteed.
3. If there are group members with a **relative** that fell at Passchendaele and this was noticed to us **at least four weeks in advance**, we will try to pick out one of our stories for them that is closest to this soldier. If preferred, in addition and free of charge, we can provide extra source material considering this relative so they can work on their relative or compare both cases during their research. Please notice that **some cases of relatives might be complex to research** and could possibly not be treated completely or in detail during the workshop.
4. It is advisable to visit Tyne Cot Cemetery after the workshop so that the participants can visit the grave or memorial of their soldier if they wish.

## PERSONAL RECORDS:


- Our standard package of personal records contains information about eleven casualties with a grave at Tyne Cot Cemetery and seven who are commemorated on the Tyne Cot Memorial:
  -  Eight British (two Scots, one Northern Irishman and a father and son who died on the same day);
  -  Four Canadians (of whom one emigrated from Belgium, one was Scottish and one was an American who served under the Canadian flag);
  -  Three New Zealanders;
  -  Two Australians;
  -  One South African (a Briton who served under the South African flag).

These individuals were chosen to emphasize the diversity of nationalities involved in the Battle of Passchendaele.


- Besides the standard package, we also offer packages that focus on specific nations: **Australia, Canada, New Zealand** and the **United Kingdom**. Each of these packages contains a maximum of about 15 personal stories.
  - ➔ On the next page you will find an overview of these packages. Our museum team is always ready to tailor the distribution of personal files to your programme. You are free to ask for a specific set or combination of personal stories during your booking.

**A standard package contains the following soldiers:**




George Addis ADAMSON  
† 12 October 1917 




Arthur Heather AITKEN  
† 4 October 1917 




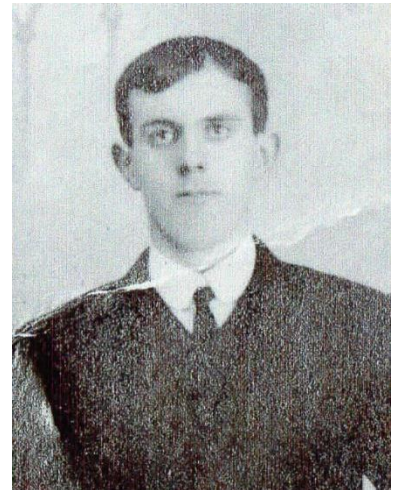
James Edward ANDERSON  
† 20 September 1917 




Neville Henry ARDEN  
† 4 October 1917 





John Nicholas CROWLEY  
† 12 October 1917 




William Waterstone DICK  
† 26 October 1917 



Edwin Patrick FITZGERALD  
 




Edmund GRAY  




William Daniel HOLBORNE


† 30 October 1917




Clarence Smith JEFFRIES  
† 12 October 1917 


† 16 August 1917




Athol KITCHEN  
† 12 October 1917 

† 30 October 1917 




Hugh MACINNES  
† 30 October 1917 




Harry MOORHOUSE  
† 9 October 1917 




Ronald W. MOORHOUSE  
† 9 October 1917 




Frederick George NASH  
† 16 August 1917 




William RHODES  
† 31 July 1917 



Richard VERHAEGHE  
† 30 October 1917 



James WILKINSON  
† 20 September 1917 



**The Australian package contains the following soldiers:**



Ernest BAKER  
† 12 October 1917



John A. BLOOMFIELD  
† 12 October 1917



John Nicholas CROWLEY  
† 12 October 1917



John Bungay FRANCIS  
† 12 October 1917



Eric A. E. GOODACRE  
† 12 October 1917



John Aubrey HANCHETT  
† 4 October 1917



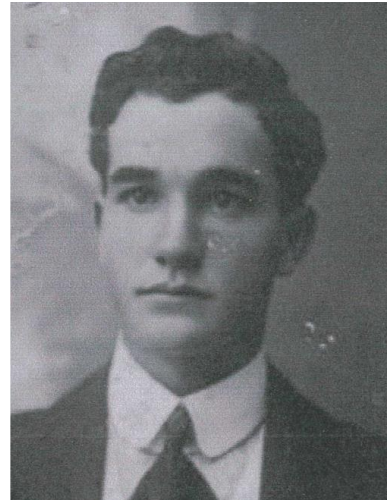
Daniel Joseph HARDY  
† 12 October 1917



George Thomas HEMSLEY  
† 9 October 1917



Clarence Smith JEFFRIES  
† 12 October 1917



Percy R. R. MUNDY  
† 4 October 1917



Henry James PURVIS  
† 20 September 1917



John Alexander RAYNER  
† 26 September 1917



Myles REILLY  
† 4 October 1917



Ernest William SERLS  
† 4 October 1917



Charles James SHEA  
† 26 September 1917







**The Canadian package contains the following soldiers:**



Lionel Victor CLARE  
† 30 October 1917



David DONALDSON  
† 6 November 1917



John Frederick FIELDING  
† 30 October 1917



Edwin Patrick FITZGERALD  
† 30 October 1917



John Manuel HENSLEY  
† 30 October 1917



William Daniel HOLBORNE  
† 30 October 1917



John Morgan JONES



Roy Douglas LOOMIS



Hugh MACINNES

† 10 November 1917



Francis John QUESNELL  
† 6 November 1917

† 6 November 1917



James Peter ROBERTSON  
† 6 November 1917

† 30 October 1917



Frank ROGERS  
† 6 November 1917



James Nelson ROSE  
† 6 November 1917



James Arthur STEVENSON  
† 26 October 1917



Richard VERHAEGHE  
† 30 October 1917



**The New Zealand package contains the following soldiers:**



Arthur Heather AITKEN  
† 4 October 1917



Neville Henry ARDEN  
† 4 October 1917



Norman ASHTON  
† 4 October 1917



Walter Whiston BULLOCK  
† 4 October 1917



Alfred DRUITT  
† 4 October 1917



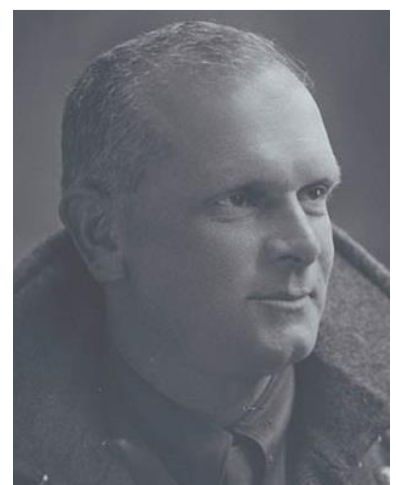
Leonard James GRIBBLE  
† 4 October 1917



Athol KITCHEN



Charles O. C. MADSEN



Herbert A. E. MILNES

† 12 October 1917



Thomas Sinclair SCLATER  
† 12 October 1917

† 4 October 1917



Victor R. S. SCOTT  
† 4 October 1917

† 4 October 1917



James Alexander SMITH  
† 4 October 1917



Ambrose George SNELL  
† 12 October 1917



Oscar STEERS  
† 4 October 1917



William Aflred TYREE  
† 4 October 1917

 **The United Kingdom package contains the following soldiers:**



George Addis ADAMSON  
† 12 October 1917



James Edward ANDERSON  
† 20 September 1917



Albert Joseph ATKINS  
† 4 October 1917



George BOWIE  
† 12 October 1917



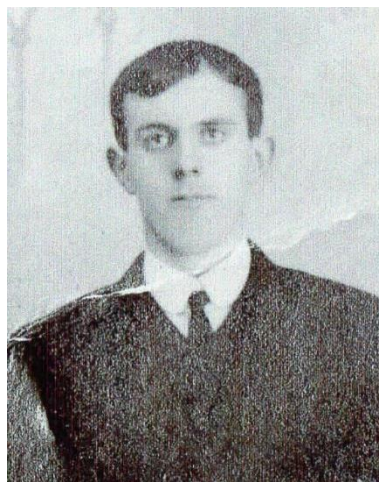
Alfred Heaton BROWN  
† 9 October 1917



William CLAMP  
† 9 October 1917



Charles CRITCHLOW



William Waterstone DICK  
† 26 October 1917



Edmund GRAY  
† 16 August 1917

† 26 October 1917



Robert HUNTLY  
† 20 September 1917



William MACHRAY  
† 12 October 1917



William MONAGHAN  
† 16 August 1917



Harry MOORHOUSE  
† 9 October 1917



Ronald W. MOORHOUSE  
† 9 October 1917



Frederick George NASH  
† 16 August 1917



William RHODES  
† 31 July 1917

## IN THE AREA:

You can easily combine a visit to the museum with visits to other sites in the area. The following locations and attractions are within walking distance or less than 10 minutes' drive from our car park:

The museum is located in the **grounds of the Zonnebeke chateau**, which is freely accessible. In the park are eight Passchendaele Memorial Gardens, poppy-shaped gardens that serve as memorials for countries that fought in this area (Canada, the United States, Australia, New Zealand, France, Great Britain, Germany and Belgium).

The **Zonnebeke church tower** is located near the museum and is accessible free of charge. Group reservations (from 15 persons) are possible at 9:30 am, 11:30 am, 1:30 pm or 3:30 pm via [booking@zonnebeke.be](mailto:booking@zonnebeke.be). In the tower, with its multiple floors, the exhibition 'Scarred Landscape' shows the evolution of the landscape in the Ypres area. From the top, at a height of 40 meters, you can enjoy a panoramic view of Ypres, Passendale and the former battlefields of WWI.

**Tyne Cot Cemetery** is approximately 5 minutes' drive from our museum. The site can also be reached on foot via The Road to Passchendaele, a traffic-free walk of approx. 3 km that passes a nearby **crypt for fallen Belgian soldiers**. With 11,956 graves, Tyne Cot is the largest Commonwealth War Graves cemetery in the world, a silent witness to the Battle of Passchendaele. A Visitors Centre (Vijfwegestraat, near the car park) provides more information about the cemetery itself and offers a panoramic view of the battlefields of 1917.

**Polygon Wood** is about three minutes' drive from the museum and, like Tyne Cot Cemetery, can be reached via a traffic-free trail. The spacious car park is within walking distance of Polygon Wood Cemetery and Buttes New British Cemetery.

